

USING YOUR FLOCARE GIVING SET WITH READY-TO-HANG NUTRITION

Reducing how much plastic we use has become more important to all of us and we would like you to join us on this mission.

Independent tests on our Flocare giving sets show that using the same giving set for a full 24-hour period is safe to do. Even if you use more than one bottle of nutrition per day or if you start and stop your pump throughout the day, you can continue with the same giving set.

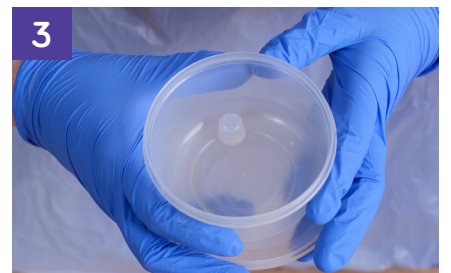
This is how you can do it:



All the giving sets are tested and suitable for single patient use. This means that the same person can use the same giving set more than once within 24 hours.



When connecting the giving set for the first time in the day, make sure you keep the cap from the tube connection end of the giving set.



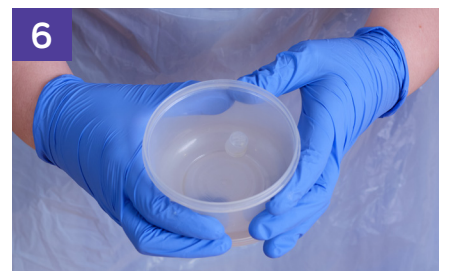
Keep the cap safe in a small container with a lid. The small cap is a choking hazard, so please ensure it is kept safe.



When it's time, disconnect the giving set from your feeding tube.



Replace the cap on the end to protect it from getting dirty.



Every time you connect and disconnect, make sure to replace or remove the small cap and keep it safe.

Continued overleaf...

NUTRICIA
flocare®

Continued



The Nutricia ready-to-hang feed and attached giving set can remain in the frame or stand in between use.



Make sure you discard any left-over nutrition and the giving set after 24 hours.



If your Nutricia ready-to-hang feed is an OpTri bottle, remember to put it into your plastic recycling bin.*

**Please speak to your managing healthcare professional before commencing this practice.
If you have any questions, also contact your managing healthcare professional**

*Nutricia 1500ml Packs are not recyclable.



Nutricia Ltd, White Horse Business Park, Trowbridge, Wiltshire BA14 0XQ.
nutriciaflocare.com

SCC4071-04/22



Scan here to watch a video on how to reduce your plastic usage