

FLOCARE[®] INFINITY[™] 3

PICTORIAL GUIDE

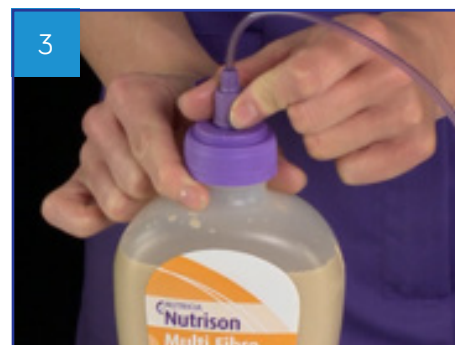
RATE THERAPY



1
First check you have the correct tube feed and that it's in date



2
Attach Flocare Infinity Pack giving set



3
Screw on tightly; hang the bottle or container on the back of the stand using the z-hook or place in go-frame



4
Open pump door and insert giving set



5
Close door



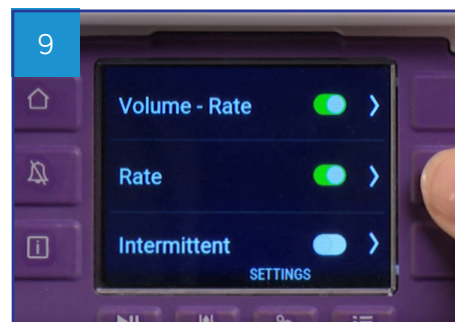
6
Press and hold on/off button until beeps



7
Make sure you're in the home screen — if not press the home button



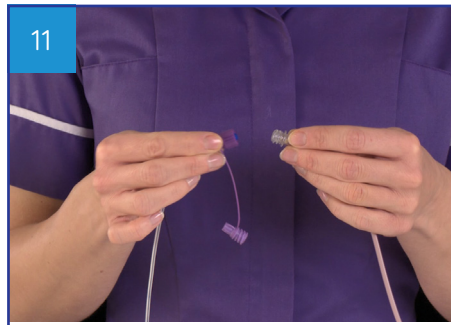
8
Press the therapy button



9
If the rate therapy is not listed, go to settings and choose define therapy list, activate the rate only option



Set rate by pressing the +/- buttons. Press the middle button to confirm

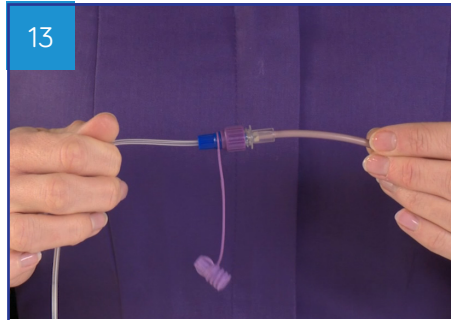


You now need to prime the giving set; make sure the giving set is not connected to the tube



Press and hold the fill set button, after 2 seconds the pump will start

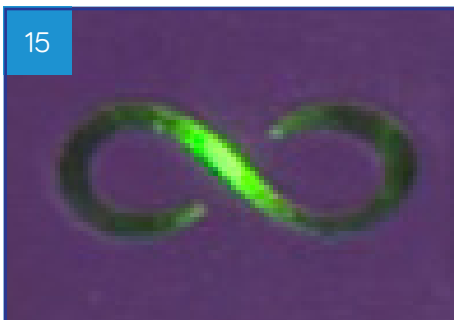
The fill set button should only be used to fill a new and empty air-filled giving set.
Do not use the fill set function for any other purpose.



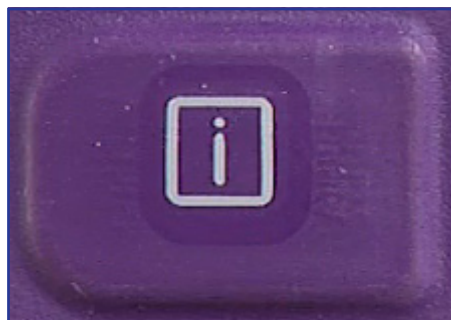
Connect the giving set to the feeding tube



Press start to begin feeding



The light on the run symbol indicates the pump is working



Press info button for additional information



Press alarm button to silence alarm. For further information on alarms please see troubleshooting guide

For more information call 0800 093 3672
or for online training visit NUTRICIAFLOCARE.COM

Information contained here relates to programming the pump only. For clinical queries contact your healthcare professional.