

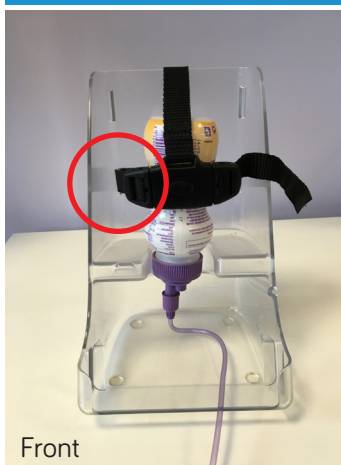
# FLOCARE GO-FRAME INSTRUCTIONS FOR USE

## 500ml OpTri Bottle



For 500ml OpTri bottles, thread the side straps through the **BOTTOM** slots of the go-frame; the top strap should be threaded as per image above.

## 200ml Bottle



For 200ml bottles, thread the side straps through the **BOTTOM** slots of the go-frame; the top strap should be threaded through the middle slot.

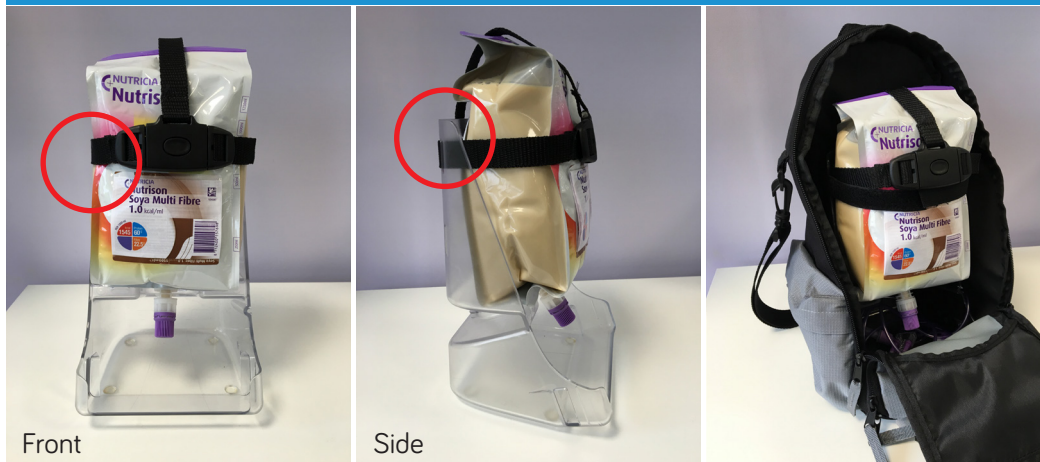
## 125ml Bottle



For 125ml bottles, thread the side straps through the **BOTTOM** slots of the go-frame; the top strap should be threaded as per image above.

# FLOCARE GO-FRAME INSTRUCTIONS FOR USE

## 1500ml Pack



For 1500ml Packs, thread all straps through the **TOP** slots of the go-frame.

## 1000ml OpTri Bottle



For 1000ml OpTri bottles, thread all straps through the **TOP** slots of the go-frame.