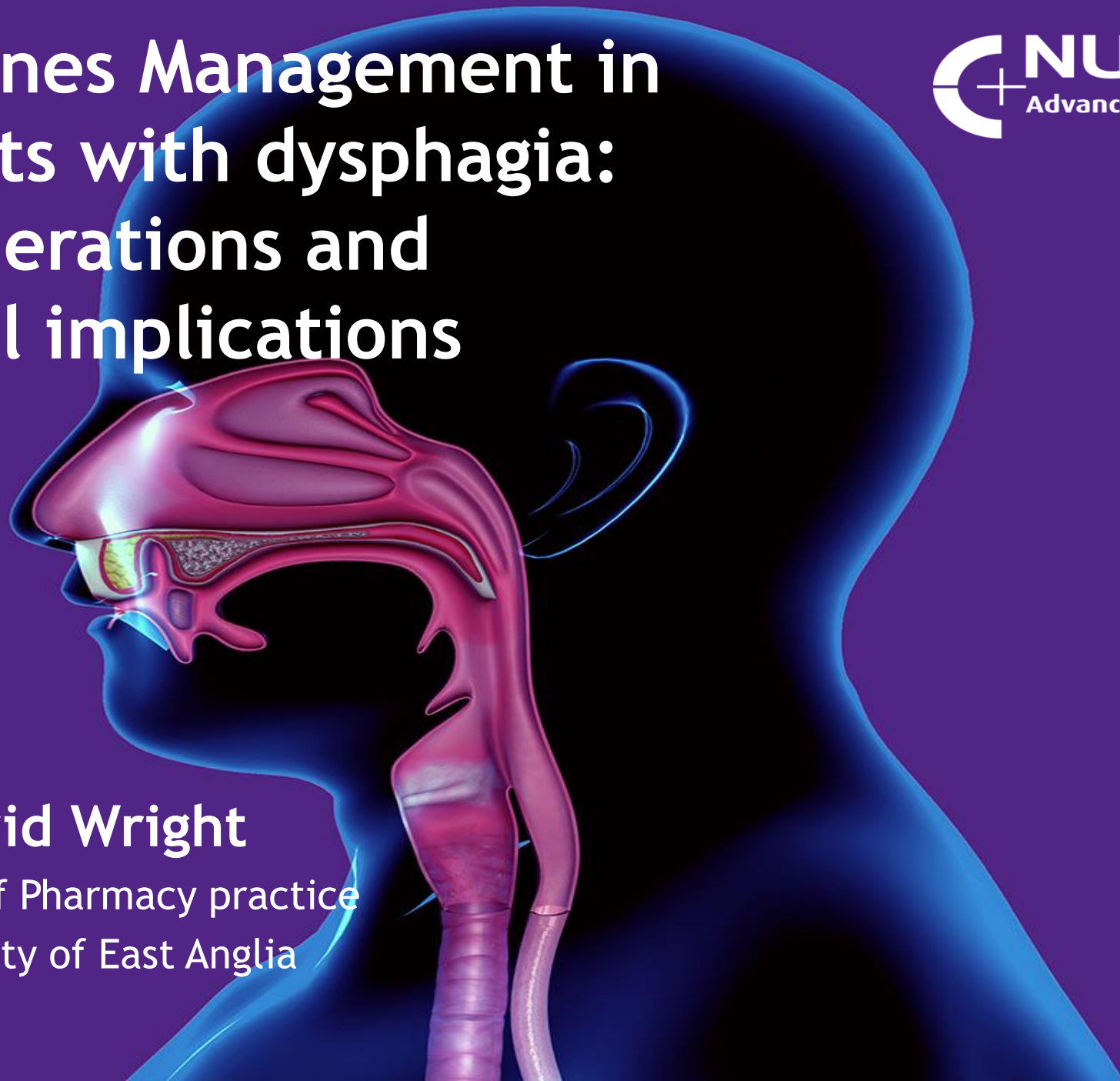


Medicines Management in patients with dysphagia: Considerations and clinical implications



David Wright

Professor of Pharmacy practice
University of East Anglia



Presentation



- Personal history
- Prevalence
- Observation of practice
 - Hospital wards
- Drug absorption
- Different types of tablet
- Summary

Personal history

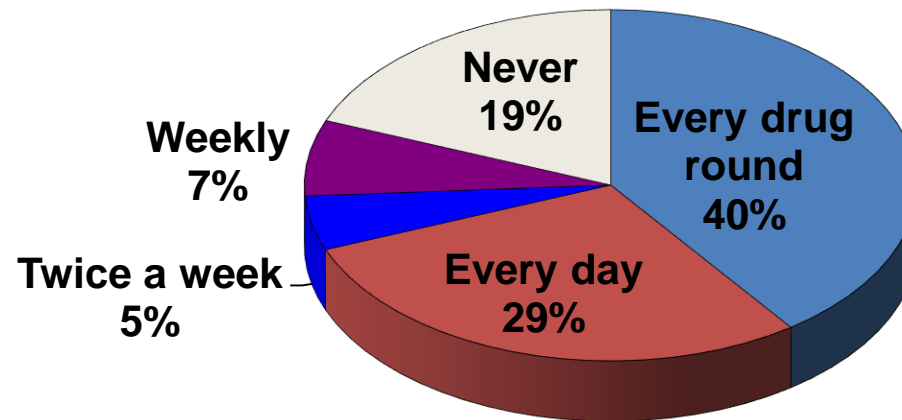


- Practising community pharmacist 1992 to 2016
- PhD: Clinical pharmacy services in care homes
- Interest in dysphagia started in 2000
- Massive Open On-Line Course
 - ‘Dysphagia: Swallowing Difficulties and Medicines’
- Book
 - Prescribing Medicines for Patients with Dysphagia
- Website
 - www.swallowingdifficulties.com

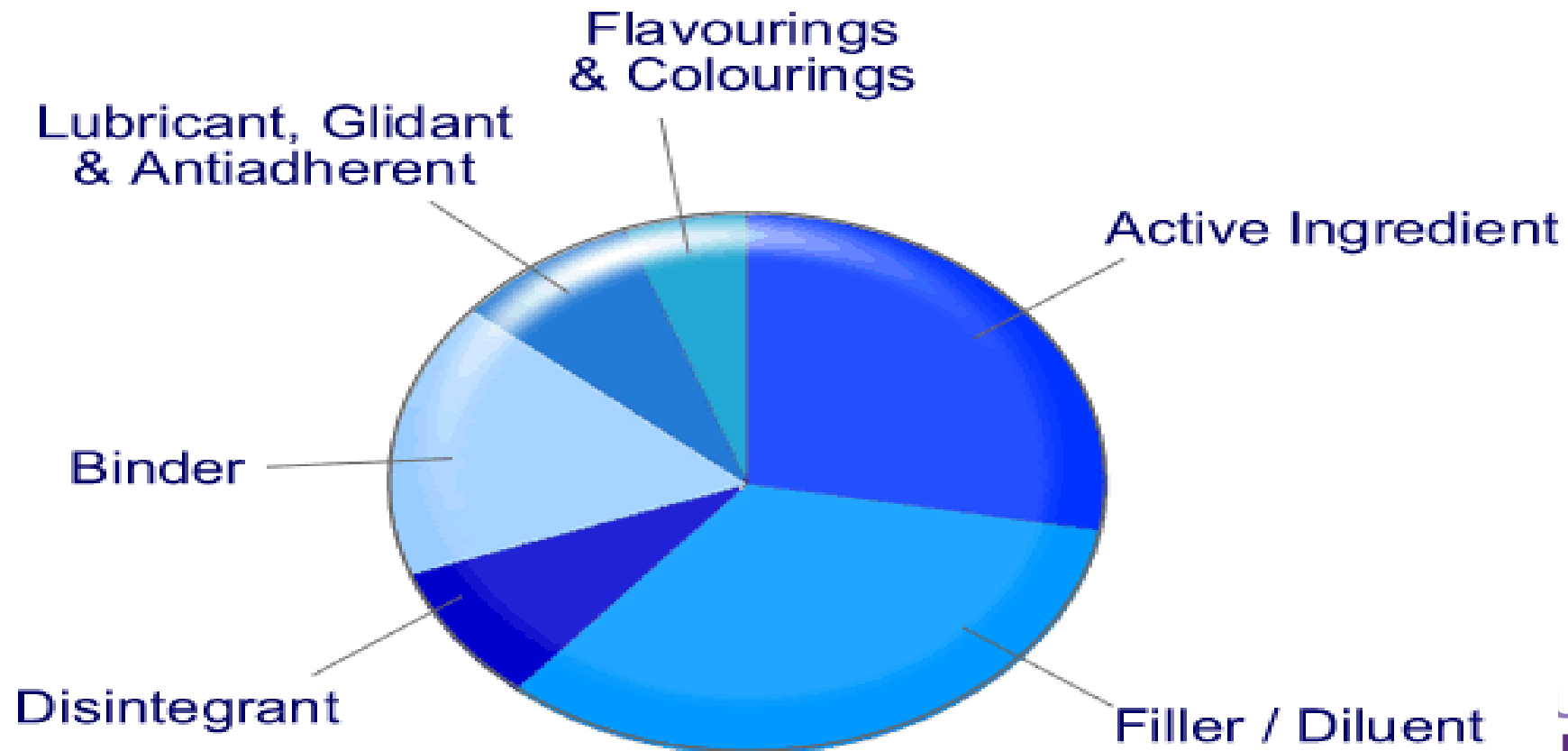
National UK survey 2002



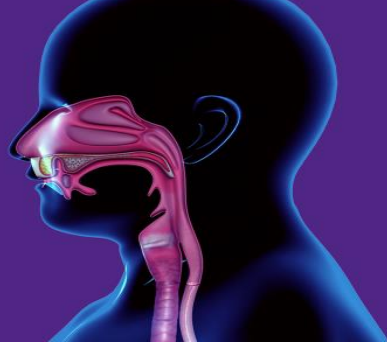
- ▶ Regional care home nurse training days
- ▶ 540 nurses response to frequency of crushing medicines



The beautiful tablet



What is the effect of dysphagia on likelihood of medication administration errors? QD1



- A. 10% less chance
- B. No effect
- C. 10% increased chance
- D. 100% increased chance
- E. 300% increased chance

Observation of ward rounds



- ▶ 4 hospitals, 8 wards
- ▶ 2129 drug administrations observed
 - ▶ 817 had an error
 - ▶ 313 involved patients with dysphagia
- ▶ Patients with at least one Medication Administration error
 - ▶ Without dysphagia 14%
 - ▶ With dysphagia 33% (p<0.001)
 - ▶ With enteral tubes 56% (p<0.001)
- ▶ Administrator was last line of defence

Wrong formulation



- ▶ 8 patients chewing modified release medicines
 - ▶ Swallowing problem not previously identified
- ▶ Tablets crushed in 24 cases
 - ▶ No modified release preparations
 - ▶ Without the prescriber's authorisation
 - ▶ Seven cases licensed liquid formulation available
- ▶ Enteral tube not flushed in 36 cases

Swiss cheese model

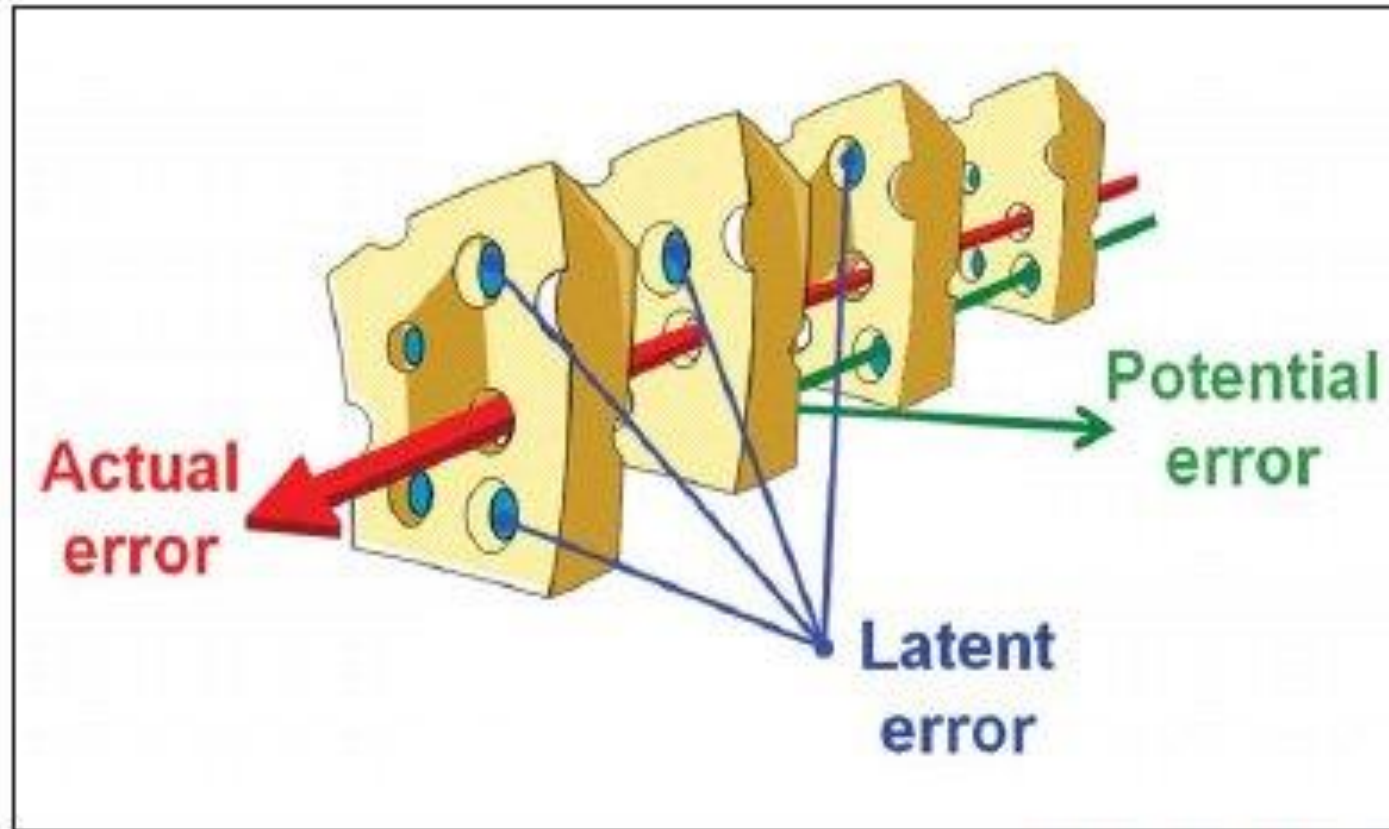
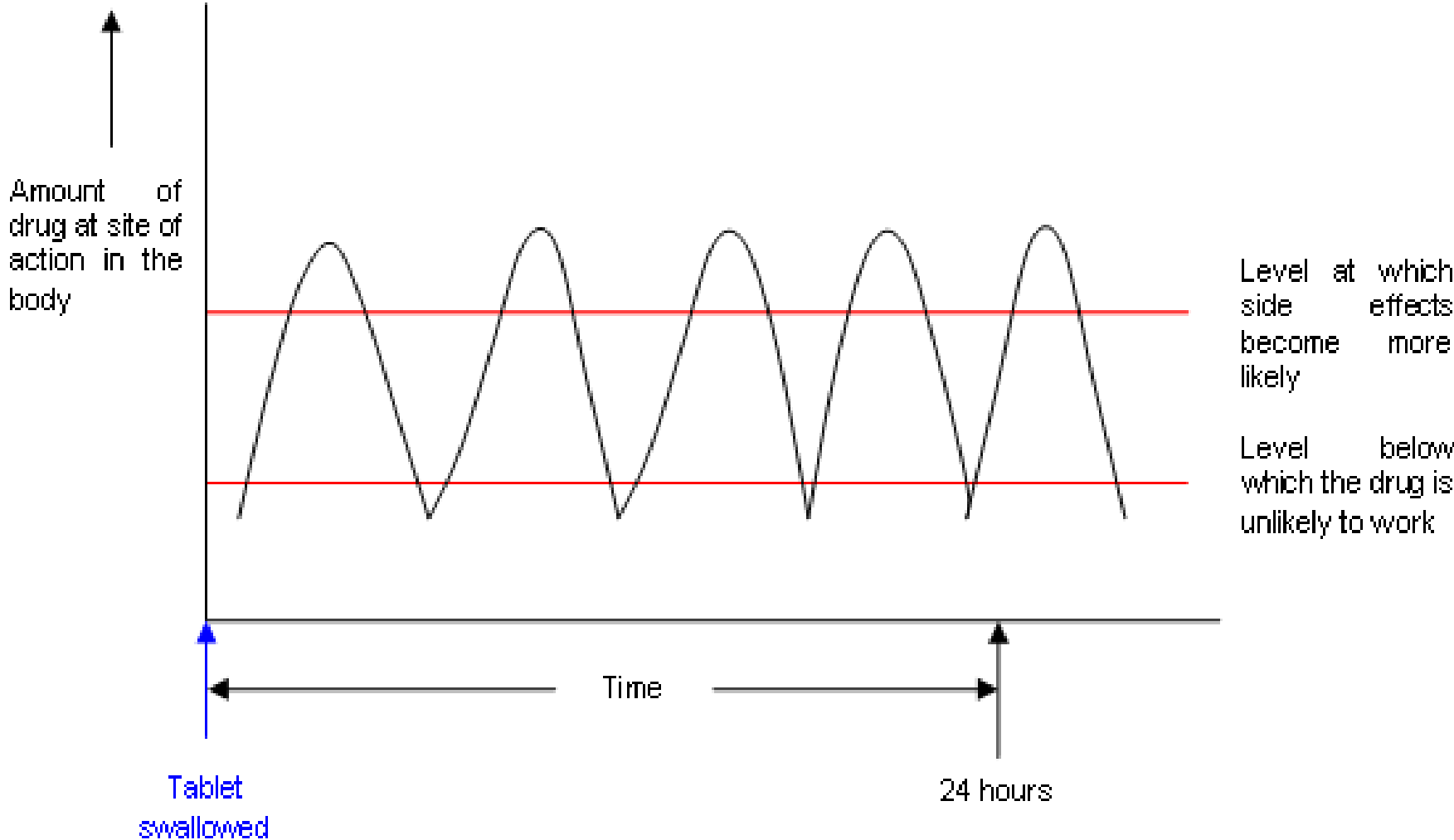
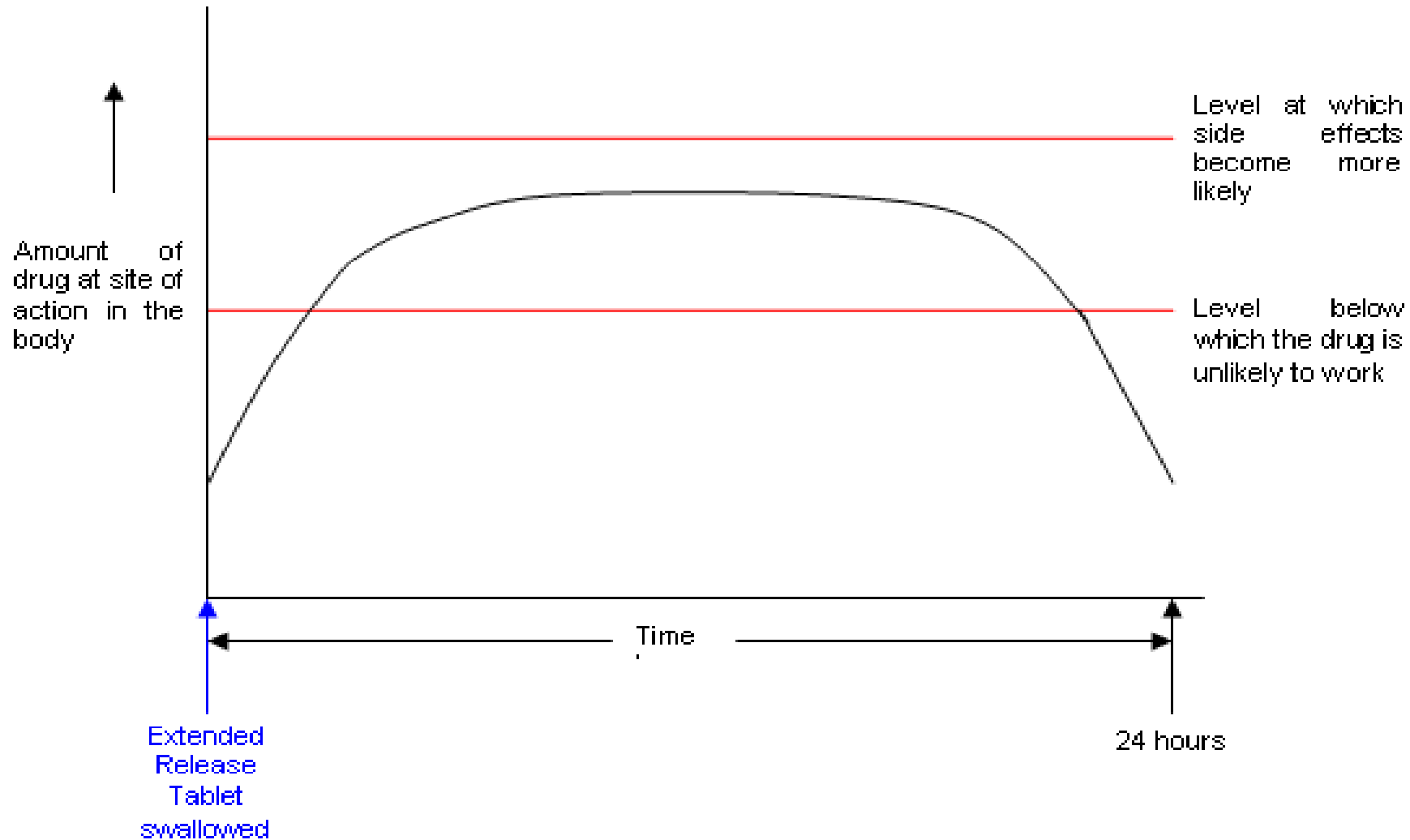


Figure 2: Error Trajectory

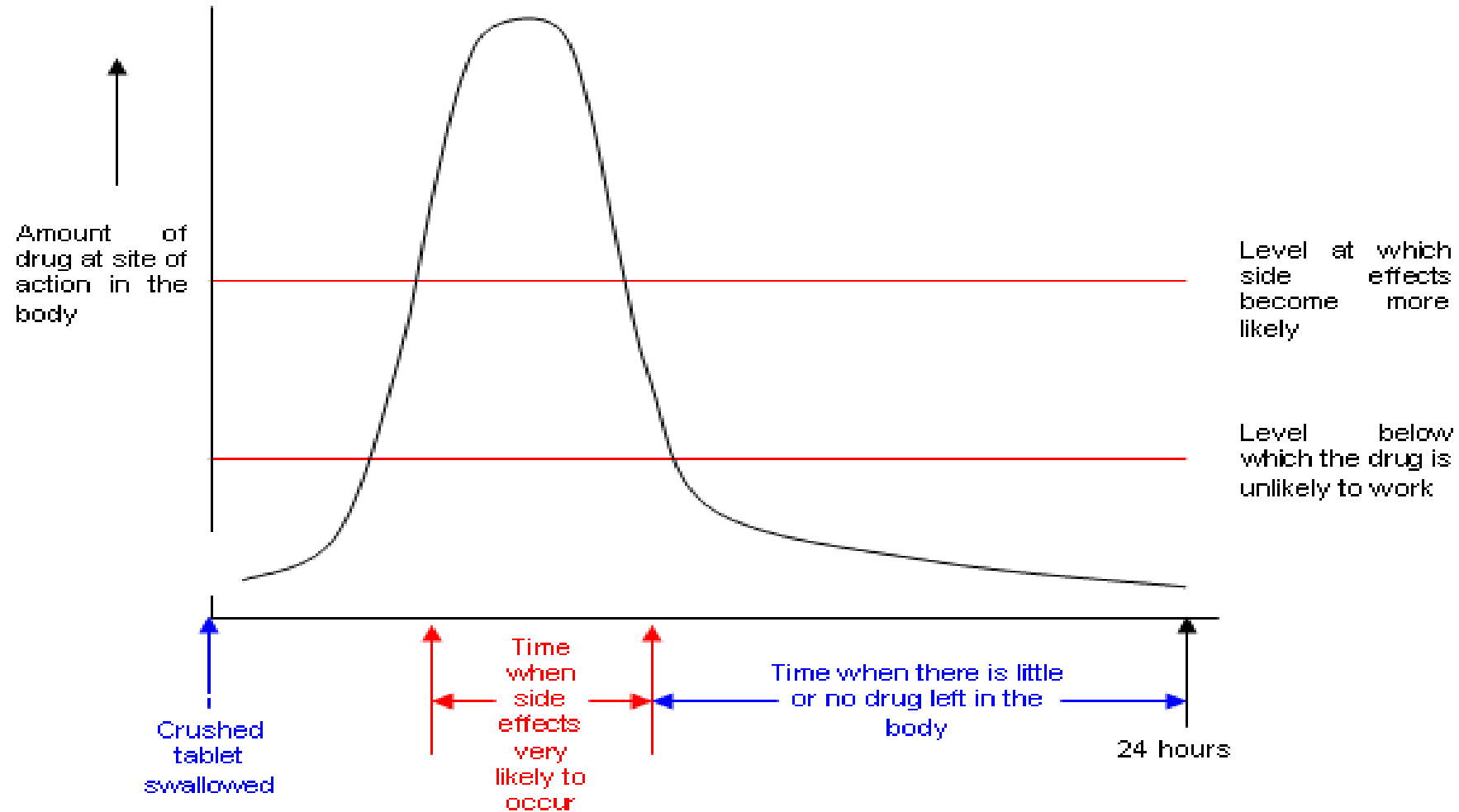
Drug Absorption



Modified release absorption



Modified release crushed



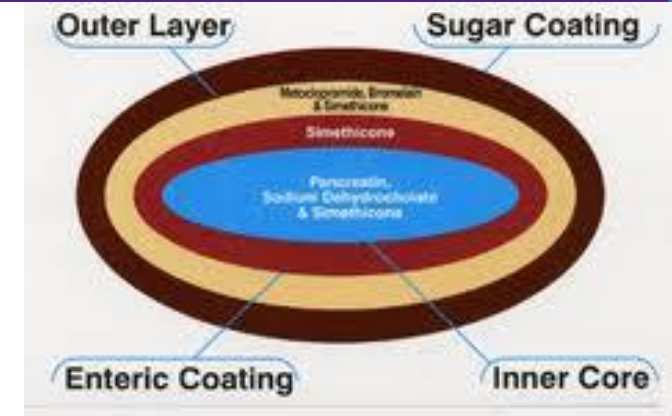
TRICIA
utilis
Clear

Enteric coatings



- ▶ Release at higher PH
 - ▶ To protect stomach
 - ▶ To protect the medicine
 - ▶ To deliver medicine to appropriate location

- ▶ Remove coating
 - ▶ Cause adverse drug reaction
 - ▶ Reduce medicine efficacy



Film or sugar coatings



- Film or sugar coatings
 - To mask flavour
 - Quinine
 - To protect from skin sensitisation
 - Chlorpromazine
 - To protect from environment during storage



Which of these can be safely crushed or opened?



- A. Ibuprofen tablets
- B. Methotrexate tablets
- C. Diclofenac ec tablets
- D. Mesalazine ec tablets
- E. Dipyridamole m/r capsules

Wrong preparation



- 65 preparation errors including:
 - Measuring 2.5mL dose of oramorph using cup
 - Inappropriate syringes used via enteral tube
 - Frequent non-flushing enteral tubes
 - 26 cases of mixing different medicines together before dispersing



Is it safe to mix medicines with thickeners? QD3



- A. I have absolutely no idea
- B. There is no evidence to support doing so
- C. There is evidence suggesting that it can stop medicines from being absorbed
- D. Is it safe not to?
- E. Probably, if you monitor for efficacy

Summary



- Dysphagia creates medication errors
- Consider medicine, route, formulation, thickness
- Consider legality and covert administration
- Seek pharmacist advice prior to crushing
 - Options
 - Safety
- Crush and mix - monitor

My main learning point is: QD4



- a) Dysphagia increases medication errors
- b) Only give medicines where benefits outweigh risks
- c) Formulation tampering can be dangerous
- d) Seek advice from a pharmacist
- e) Thickeners and medicines - monitor for change in efficacy

References



- ▶ Kelly J, Wood J, Wright D. Medication administration errors in secondary care older person's wards: A multi-centre observational study. *Journal of Advanced Nursing*: 67(12), 2615-2627.
- ▶ Kelly J, Wright D. Medicine administration errors and their severity in secondary care older persons' ward: A multi-centre observational study. *Journal of Clinical Nursing* 2011
- ▶ Kelly J, Wright D. An analysis of two incidents of medicine administration to a patient with dysphagia. *Journal of Clinical Nursing*. September 2010.
- ▶ Kelly J, Wright D. A qualitative study of dysphagic patients' experiences of taking medication. *Journal of Advanced Nursing*. 2009; 66(1), 82-91
- ▶ Kelly J, Wright D. A qualitative study of the problems surrounding medicine administration to patients with dysphagia. *Dysphagia* 2009;24(1):49-56

- ▶ Tomita T, et al. Effect of Food Thickener on the Inhibitory Effect of Mitiglinide Tablets on Post-prandial Elevation of Blood Glucose Levels. *Dysphagia*. 2017 Jun; 32(3): 449-503. doi: 10.1007/s00455-017-9787-1.
- ▶ Wright D. Swallowing difficulties protocol: Medication administration. *Nursing Standard* 2002;17(no.s 4-15):43-5.
- ▶ Wright D. Medication administration in nursing homes. *Nursing standard* 2002; 16(42): 33-8.



Thanks for listening

Any questions?