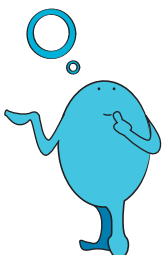
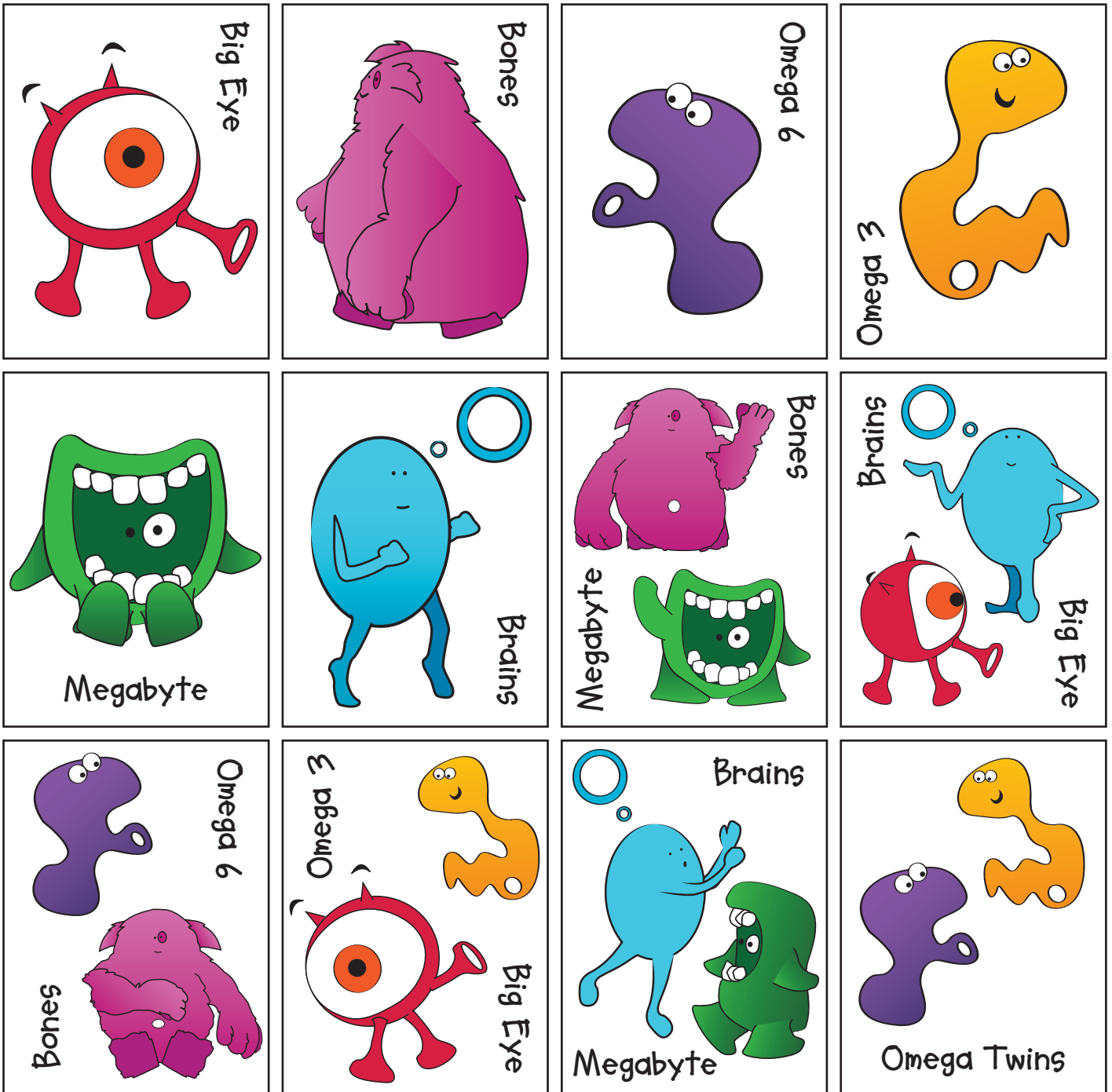


The Anamix 6 Memory Game

There are 12 different cards. Print out two sets to create the memory game.

The rules are at the bottom of the page.



Instructions for parents:

Cut out along the black line. You could make them super strong by gluing the page onto a piece of card before you cut them out!

You can play this game on your own or with other players! The aim of the game is to find pairs of matching cards. Shuffle all the cards before you start, then spread them out face-down, making sure they aren't touching.

Take it in turns to turn-over two cards, if the two cards match you get to keep the pair - if they don't match turn them back face-down but try to remember where they are you may find a matching card on your next turn!

The player with the most pairs is the WINNER.